

CANISIUS COLLEGE

STATISTICAL ABSTRACT

INSTITUTIONAL DATA

Spring 2016 (201540)

Prepared by:
Office of Research and Institutional Effectiveness

Canisius College at a Glance

| | Undergrad. | Graduate | Total |
|-----------------------------------|------------|----------|--------|
| Enrollment, Spring 2016 | 2,664 | 1,145 | 3,809 |
| Enrollment, Spring 2015 | 2,797 | 1,241 | 4,038 |
| Percent Change in Enrollment | -4.8% | -7.7% | -5.7% |
| Number Full-time | 2,388 | 455 | 2,843 |
| Number Part-time | 276 | 690 | 966 |
| Percent Full-time | 89.6% | 39.7% | 74.6% |
| Percent Part-time | 10.4% | 60.3% | 25.4% |
| Credit Hours Attempt. Spring 2016 | 37,585 | 8,276 | 45,861 |
| Credit Hours Attempt. Spring 2015 | 39,866 | 9,079.5 | 48,946 |
| Percent Change in CH Attempted | -5.7% | -8.8% | -6.3% |
| FTE, Spring 2016 | 2,482 | 844 | 3,326 |
| FTE, Spring 2015 | 2,626 | 916 | 3,542 |
| Percent Change in FTE | -5.5% | -7.9% | -6.1% |
| Enrollment by College | | | |
| College of Arts and Sciences | 1,369 | 64 | 1,433 |
| School of Ed. & Human Services | 366 | 813 | 1,179 |
| Wehle School of Business | 717 | 268 | 985 |
| No College Designated | 212 | 0 | 212 |
| Total | 2,664 | 1,145 | 3,809 |
| Enrollment by Gender | | | |
| Percent Male | 48.6% | 37.3% | 45.2% |
| Percent Female | 51.4% | 62.7% | 54.8% |
| Average Age | 20.4 | 29.7 | 23.2 |
| Enrollment by Residence | | | |
| On-campus Resident | 1,112 | 26 | 1,138 |
| Percent Resident | 41.7% | 2.3% | 29.9% |

| Enrollment by Ethnicity | Number | Percentage |
|--|--------|------------|
| American Indian/Alaska Native | 8 | 0.2% |
| Asian | 76 | 2.0% |
| Black/African American | 271 | 7.1% |
| Hispanic | 187 | 4.9% |
| Native Hawaiian/Pacific Islander | 3 | 0.1% |
| Non-Resident Alien | 172 | 4.5% |
| Two or More Races | 51 | 1.3% |
| Unknown | 338 | 8.9% |
| White | 2703 | 71.0% |
| Enrollment by CH Hours Earned | | |
| 0 to 29 | 706 | 18.5% |
| 30 to 59 | 559 | 14.7% |
| 60 to 89 | 593 | 15.6% |
| 90 plus | 806 | 21.2% |
| Graduate | 1,145 | 30.1% |
| Enrollment by Student Type | | |
| UG Continuing(Including Kings) | 2,382 | 62.5% |
| UG Cross Registered | 59 | 1.5% |
| UG High School Students | 130 | 3.4% |
| UG New First Time (Includes 1 st FR | 6 | 0.2% |
| UG Re-admit | 2 | 0.1% |
| UG Transfer (Includes 1 st TR | 50 | 1.3% |
| UG Transient | 24 | 0.6% |
| UG Visiting | 11 | 0.3% |
| Grad Continuing (Includes Kings) | 977 | 25.6% |
| Grad, New First Time | 140 | 3.7% |
| Grad, Visiting, Transient, Re-Admit | 28 | 0.7% |
| Enrollment by Residency | | |
| Canadian | 75 | 2.0% |
| International | 86 | 2.3% |
| New York Resident | 3,234 | 84.9% |
| Out-of-state Resident | 404 | 10.6% |
| Unknown | 10 | 0.3% |
| Receiving Federal Pell Grants | | |
| Full Time Undergraduates | 797 | 33.4% |
| Part Time Undergraduates | 13 | 4.7% |

ENROLLMENTS BY MAJOR

*Includes double counting

COLLEGE OF ARTS & SCIENCES

Undergraduate Programs

| Code | Major | Count |
|--------------|------------------------------------|-------|
| ABEC | Animal Behavior, | 186 |
| AHM | Art History | 4 |
| ANT | Anthropology | 12 |
| BCH | Biochemistry | 32 |
| BCHA | Biochemistry, ACS Certified | 4 |
| BIF | Bioinformatics | 12 |
| BIO | Biology | 213 |
| CHM | Chemistry | 11 |
| CHM | Chemistry, ACS Certified | 4 |
| CHM | Chemistry, Health Professions | 14 |
| CLLA | Classical Languages | 0 |
| CLS | Classics | 1 |
| CLSG | Classics, Greek | 3 |
| CLSL | Classics, Latin | 3 |
| COM | Communication Studies | 144 |
| CRJ | Criminal Justice | 90 |
| CRW | Creative Writing | 42 |
| CSC | Computer Science | 59 |
| CSCI | Computer Science | 2 |
| CSCC | Computer Science Certificate | 0 |
| DMA | Digital Media Arts | 74 |
| EN 32 | Physics (Pre-engineering 3+2) | 4 |
| ENG | English | 69 |
| ENGR | Pre-Engineering | 7 |
| ENV | Environmental Sciences | 15 |
| EUR | European Studies | 5 |
| EVST | Environmental Studies | 22 |
| FRC | French | 10 |
| GER | German | 14 |
| HIS | History | 39 |
| INT | International Relations | 46 |
| JRN | Journalism | 22 |
| LAS | Latin American Studies | 8 |
| MAT | Mathematics | 30 |
| MATS | Mathematics & Statistics | 3 |
| MLSC | Medical Laboratory Science | 11 |
| MUS | Music | 4 |
| MUSP | Music Performance | 4 |
| PHI | Philosophy | 0 |
| PHIH | Philosophy, Hypatian Scholar | 6 |
| PHII | Philosophy, Ignation Scholar | 8 |
| PHY | Physics | 5 |
| PSC | Political Science | 89 |
| PSY | Psychology | 250 |
| RST | Religious Studies | 5 |
| SOC | Sociology | 41 |
| SPA | Spanish | 19 |
| SSC | Social Scien. (BA), Adult Acad. | 0 |
| UND | Undecided | 60 |
| URS | Urban Studies | 11 |
| WSTC | Women's Studies, Certificate (ADJ) | 1 |

Graduate Programs

| Code | Major | Count |
|------------|----------------------------------|-------|
| ANZ | Anthrozoology | 42 |
| ASN | Arts & Sciences Non-Matriculated | 1 |
| COM | Communication & Leadership | 21 |

ENROLLMENTS BY MAJOR Cont'd *Includes double counting

SCHOOL OF EDUCATION & HUMAN SERVICES

Undergraduate Programs

| Code | Major | Count |
|------|------------------------------------|-------|
| ATM | Athletic Training | 35 |
| ECCH | Early Childhood/Childhood Ed. | 32 |
| EDAD | Adolescent Education | 28 |
| EDCH | Childhood Education | 3 |
| EDEC | Early Childhood Education | 1 |
| HEW | Health & Wellness | 10 |
| HUSR | Human Services | 20 |
| IND1 | Leadership/Comm. for Org. Growth | 1 |
| PEHL | Physical/Health Education | 21 |
| PEM | Physical Education | 0 |
| PESS | Physical Education Sport Studies | 6 |
| PHED | Physical Education, Birth-12 | 2 |
| PS1 | CC2CC–NCCC Radiologic | 0 |
| PS5 | CC2CC – GCC Respiratory | 0 |
| PS8 | Professional Technical | 0 |
| PS9 | Professional Technical | 0 |
| PS10 | Telecomm Technician | 0 |
| PS11 | Professional Technical | 0 |
| PS14 | Professional Technical Studies | 1 |
| SPE1 | Special/Childhood Education, | 40 |
| SPEB | Special/Early Childhood Ed. Birth- | 1 |
| SPMT | Sports Management | 78 |
| UND | Undecided | 0 |

Graduate Programs

| Code | Major | Count |
|------|-----------------------------------|-------|
| AUE | Adolescence Education | 5 |
| AUE1 | Adolescence Urban Education | 0 |
| AUE2 | Adolescence Urban Special | 0 |
| AUE3 | Adolescence Urban Education | 0 |
| AUE4 | Adolescence Urban Bilingual | 0 |
| CLM | Clinical Mental Health Counseling | 78 |
| CMH | Community Mental Health | 0 |
| CSH | Community & School Health(OPS) | 20 |
| CSP | College Student Personnel | 46 |
| CUA1 | Childhood Urban Education | 0 |
| CUA2 | Childhood Urban Special Education | 0 |
| CUA3 | Childhood Urban Education | 0 |
| CUA4 | Childhood Urban Bilingual | 0 |
| CUE | Childhood Education | 14 |
| ECU | Early Childhood Education | 5 |
| ECU2 | Early Childhood Urban Special | 0 |
| ECU3 | Early Childhood Urban Education | 0 |
| ECU4 | Early Childhood Urban Bilingual | 0 |
| EDA | School/Administration Supervision | 3 |
| EDAD | Adolescent Education | 6 |
| EDA0 | Educational Admin./Supervision | 28 |
| EDB | Business & Marketing Education | 0 |
| EDCH | Childhood Education | 12 |
| EDD | Deaf Education | 9 |
| EDD1 | Deaf Childhood Education Grades 1 | 4 |
| EDD7 | Deaf Adolescence Ed. Grades 7 - | 0 |
| EDDI | Differentiated Instruction | 23 |
| EDG | General Education | 1 |
| EDN | General Education, Non- | 8 |

| | | |
|------|-------------------------------------|----|
| EDT | Education Technologies Certificate | 22 |
| EDT2 | Ed Tech and Emerging Medias | 4 |
| GEEX | Gifted Education Extension | 0 |
| HHP | Health & Human | 26 |
| HIT | Health Information Technology | 9 |
| LTCY | Literacy Education | 17 |
| MCX | Middle Childhood Extension | 0 |
| MSA | Sport Administration | 45 |
| NDEG | Non-Degree | 0 |
| NTC1 | Applied Nutrition Cert Track 1 | 0 |
| NTR | Applied Nutrition | 20 |
| NTR1 | Applied Nutrition, Track 1 | 0 |
| NTR2 | Applied Nutrition, Track 2 | 0 |
| ONBE | Bilingual Education | 1 |
| ONBS | Bilingual Special Ed | 1 |
| ONE2 | Teach Eng to Speakers of Other | 4 |
| ONES | Teach Eng to Speakers of Other | 63 |
| ONLT | Literacy Education, On-line | 41 |
| ONPE | Physical Education, On-line | 49 |
| ONSA | Sports Administration, On-line | 74 |
| ONSB | School Building Leadership, On- | 71 |
| ONSD | School District Leadership, On-line | 46 |
| OSBD | School Building/District Leader, | 4 |
| OTT | Online Teaching and Training | 0 |
| PEM | Physical Education | 0 |
| PHED | Physical Education, Birth-12 | 12 |
| READ | Reading Certificate | 0 |
| RES | Respiratory Care | 17 |
| RES1 | Respiratory Care, Track 1 | 0 |
| RES2 | Respiratory Care, Track 2 | 0 |
| SAC | School/Agency Counseling | 34 |
| SBDL | School Building/District Leadership | 0 |
| SBL | School Building Leadership | 7 |
| SDL | School District Leadership | 6 |
| SPE | Special Education | 9 |
| SPE1 | Special/Childhood Education, | 2 |
| SPE7 | Special Education, Adolescent | 0 |
| SPEA | Special Education, Advanced | 3 |
| SPM1 | Special Education, Childhood | 3 |
| SPM7 | Special Education, Adolescent | 2 |

WEHLE SCHOOL OF BUSINESS

Undergraduate Programs

| Code | Major | Count |
|------|--------------------------------|-------|
| ACC | Accounting | 16 |
| ACC1 | Accounting | 34 |
| ACC2 | Professional Accounting | 5 |
| AIS | Accounting Information Systems | 65 |
| ECO | Economics | 72 |
| ECON | Economics Goes to Wehle | 34 |
| ENT | Entrepreneurship | 39 |
| FIN | Finance | 20 |
| IBUS | International Business | 52 |
| MGT | Management | 94 |
| MIS | Information Systems | 20 |
| MKT | Marketing | 13 |
| UNBU | Undeclared Business | 8 |
| UND | Undecided | 11 |

WEHLE SCHOOL OF BUSINESS (Continued)

Graduate Programs

| Code | Major | Count |
|------|------------------------------|-------|
| BUN | Business, Non-matriculated | 2 |
| INT | International Business | 0 |
| MB | MBA, Part-Time Program | 17 |
| MBA | Bachelors/MBA 3+2 | 0 |
| MBA | MBA, Accounting 150 Hour | 19 |
| MBA | MBA, One Year Program | 22 |
| MBA | MBA, Professional Accounting | 38 |
| MF | Forensic Accounting | 11 |

OTHER INFORMATION

Undergraduate Programs

| Code | Major | Count |
|------|------------------|-------|
| AUDI | Auditing | 16 |
| NDEG | Non-degree | 19 |
| | Double Majors | 50 |
| | Triple Majors | 32 |
| | Quadruple Majors | 3 |

CREDIT HOURS BY DEPARTMENT AND SCHOOL

| Department | Undergrad. | Graduate | Total | % of School | % of College |
|---|------------|----------|-------|-------------|--------------|
| Animal Behavior, Ecology & Conservation | 814 | 205 | 1019 | 3.8% | 2.2% |
| Biology | 2363 | | 2363 | 8.9% | 5.2% |
| Chemistry | 1004 | | 1004 | 3.8% | 2.2% |
| Classics | 513 | | 513 | 1.9% | 1.1% |
| College Honors Program (Rpt in | 0 | | 0 | 0.0% | 0.0% |
| Communication Studies | 2232 | 123 | 2355 | 8.8% | 5.2% |
| Computer Science | 496 | | 496 | 1.9% | 1.1% |
| English | 2520 | | 2520 | 9.5% | 5.5% |
| English as a Second Language | 27 | 9 | 36 | 0.1% | 0.1% |
| Fine Arts | 1390 | | 1390 | 5.2% | 3.1% |
| First Year Seminar | 318 | | 318 | 1.2% | 0.7% |
| History | 1776 | | 1776 | 6.7% | 3.9% |
| Mathematics & Statistics | 1631 | | 1631 | 6.1% | 3.6% |
| Military Science | 288 | | 288 | 1.1% | 0.6% |
| Modern Languages | 583 | | 583 | 2.2% | 1.3% |
| Philosophy | 2180 | | 2180 | 8.2% | 4.8% |
| Physics | 462 | | 462 | 1.7% | 1.0% |
| Political Science | 923 | | 923 | 3.5% | 2.0% |
| Psychology | 2174 | | 2174 | 8.2% | 4.8% |
| Religious Studies & Theology | 2509 | | 2509 | 9.4% | 5.5% |
| Sociology/Anthropology & Criminal | 1745 | | 1745 | 6.5% | 3.8% |
| Undeclared(Unallocated) | 366 | | 366 | 1.4% | 0.8% |
| Arts & Sciences | 26314 | 337 | 26651 | 100.0% | 58.6% |

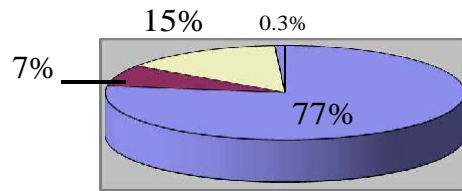
| Department | Undergrad. | Graduate | Total | % of School | % of College |
|------------------------------------|------------|----------|-------|-------------|--------------|
| Counseling & Human Services | | 973 | 973 | 11.0% | 2.1% |
| Teacher Education (1) | 1414 | 312 | 1726 | 19.5% | 3.8% |
| Graduate Education & Leadership | | 2403 | 2403 | 27.2% | 5.3% |
| Kinesiology | 2033 | 1094 | 3127 | 35.4% | 6.9% |
| Office of Professional Studies (2) | | 614 | 614 | 6.9% | 1.4% |
| Education & Human Services | 3447 | 5396 | 8843 | 100.0% | 19.4% |

| Department | Undergrad. | Graduate | Total | % of School | % of College |
|---------------------------------|------------|----------|--------|-------------|--------------|
| Accounting | 1233 | 825 | 2058 | 21.6% | 4.5% |
| Economics & Finance | 2636 | 541 | 3177 | 33.3% | 7.0% |
| Graduate Business | 0 | 0.5 | 0.5 | 0.0% | 0.0% |
| Management | 1659 | 795 | 2454 | 25.7% | 5.4% |
| Marketing & Information Systems | 1300 | 555 | 1855 | 19.4% | 4.1% |
| Wehle School of Business | 6828 | 2716.5 | 9544.5 | 100.0% | 21.0% |

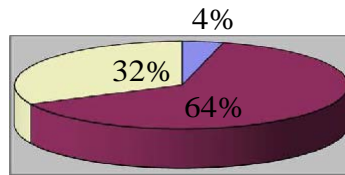
| Department | Undergrad. | Graduate | Total | % of School | % of College |
|------------------|------------|----------|---------|-------------|--------------|
| Unaffiliated | 430 | | 430 | 0.9% | 1.30% |
| CANISIUS COLLEGE | 37019 | 8449.5 | 45468.5 | | |

- (1) Starting in 201230 “Adolescence Ed” & “Education” are combined in “Teachers Education”. Also, Graduate Education and Leadership includes Sports Administration. Under Kinesiology.
- (2) Office of Professional Studies is a Department in Education and Human Services.

Undergraduate Credit Hours



Graduate Credit Hours



Total Credit Hours

